

**ITEM 46. CAR SHARE – PRIMROSE AVENUE ROSEBERY**

**TRIM RECORD NO: 2017/448856**

**RECOMMENDATION**

It is recommended that the Committee endorse the allocation of parking on the eastern side of Primrose Avenue, Rosebery between the points 13 metres and 18 metres (one car space) north of Morley Avenue, as “No Parking Car Share Vehicles Excepted” subject to the following:

- (A) The City will only install signage for the car share space when GoGet has a car to occupy the space.

<b><i>Voting Members</i></b>	<b><i>Support</i></b>	<b><i>Object</i></b>
City of Sydney		
Roads and Maritime Services		
NSW Police – Redfern LAC		
Representative for the Member for Heffron		

**DECISION**

**BACKGROUND**

The City is committed to providing dedicated parking for car sharing across the Local Government Area as part of a Council approved Car Share Policy. A submission has been received from GoGet for a car share space in Primrose Avenue, Rosebery, north of Morley Avenue.

**COMMENTS**

The kerb space on the eastern side of Primrose Avenue, Rosebery, where the car share space is proposed, is currently unrestricted.

The car share space will be installed and managed in accordance with the Roads and Maritime Service’s Technical Direction 2007/04 and the provisions of the Council-approved Car Share Policy.

Car sharing is popular in more than 600 cities worldwide, and research has shown substantial environmental benefits. Car sharing reduces total urban driving, reduces household vehicle holdings, and increases walking, cycling and public transport use.

On average, each car share vehicle in the City can replace up to 12 private vehicles that would otherwise compete for parking.

As of August 2017, there are currently 45 GoGet car share members and two spaces allocated for car share vehicles within a 250 metre radius of this location.

## **CONSULTATION**

The City consulted local residents and businesses in the area. There were 25 letters sent out with one response supporting the proposal and one response opposing the proposal.

The submission supporting the proposal noted that the space would reduce the need for car ownership improve access to car share spaces.

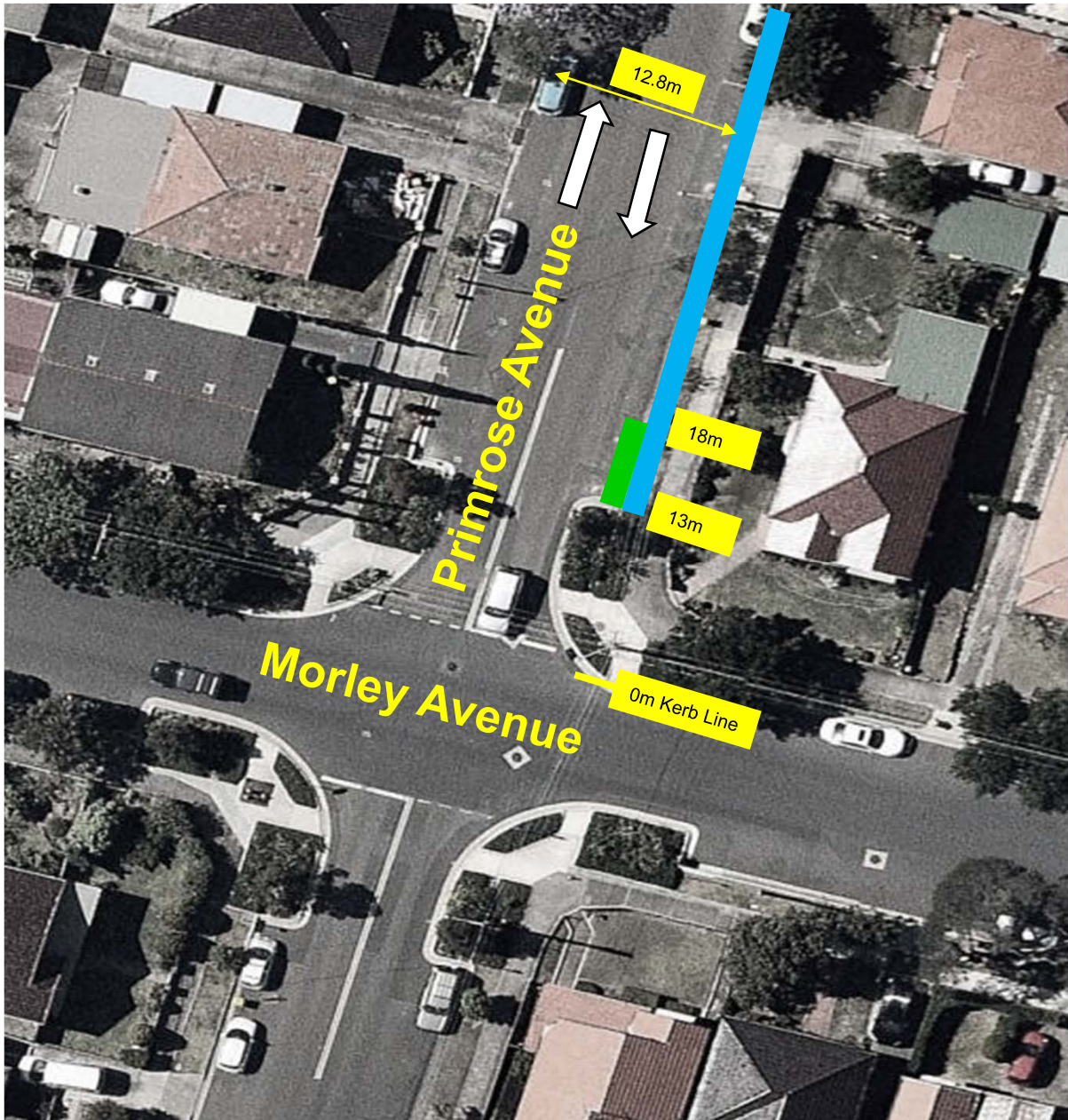
The submission opposing the proposal noted that the changes could result in too many car share spaces in the area and increase the demand for parking spaces. However, the existing car share spaces nearby have consistently high turnover usage and membership numbers in the surrounding area necessitate further capacity.

## **FINANCIAL**

Funds are available in the current budget.

Car Share – Primrose Avenue Rosebery

Manbir Singh, Senior Traffic Engineer



**LEGEND**



Unrestricted For Parking (**Existing**)



"No Parking Authorised Car Share Vehicles Excepted Zone GG" (**Proposed**)

Image Source – Nearmap (1/11/2016)



**PROPOSAL**

**PROPOSED CAR SHARE SPACE  
PRIMROSE AVENUE NORTH OF MORLEY AVENUE  
ROSEBERY**



